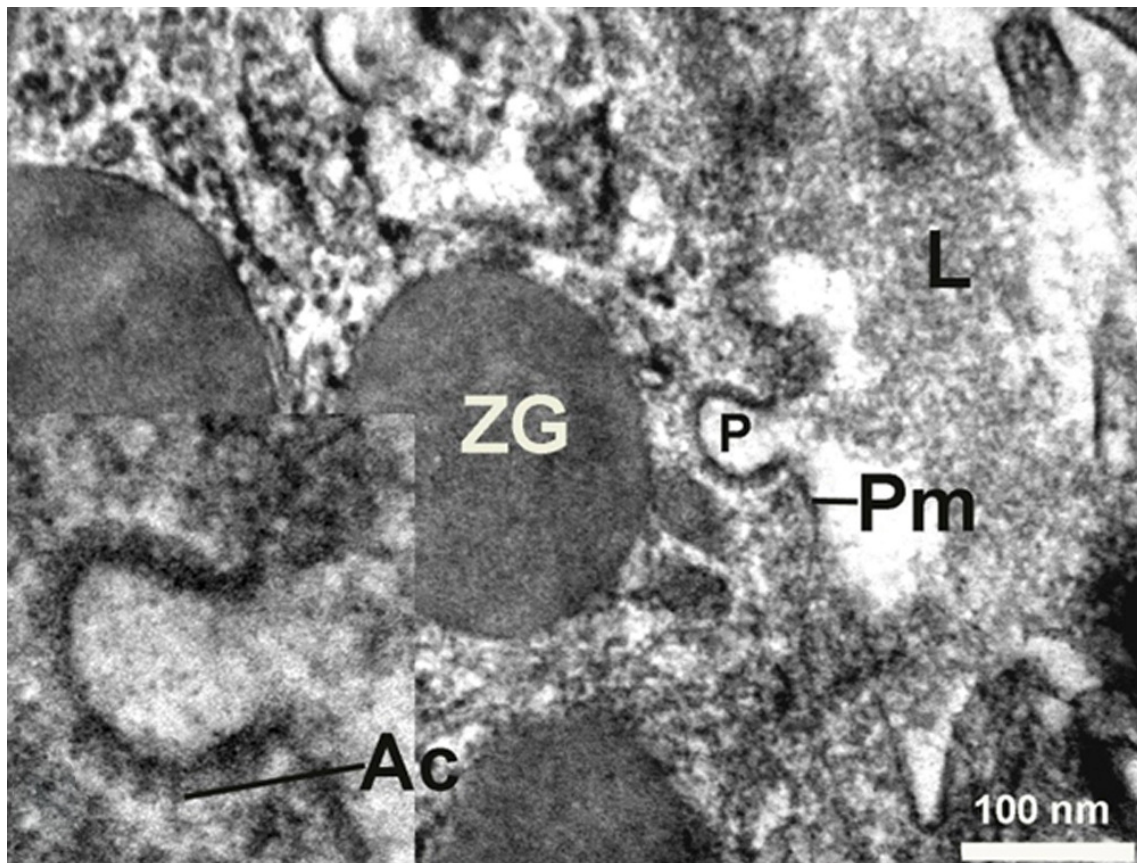
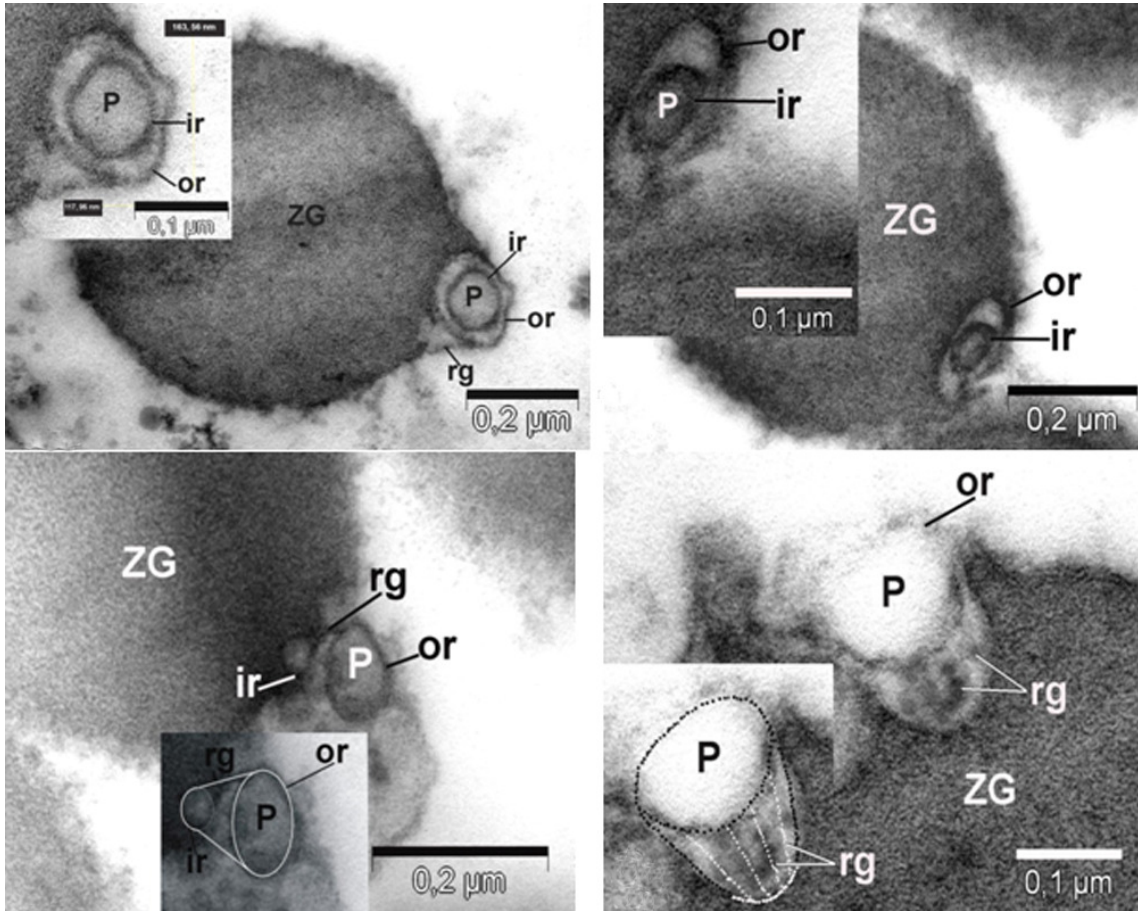


Schematic diagram of pits and porosome at the cell plasma membrane. Secretory granules (ZG) dock and transiently fuse at the porosome base to expel intragranular contents.



Porosome consists of 100-180-nm macromolecular cup-shaped lipoprotein baskets. Anchoring cables (Ac) or tethers are observed at the porosome base.



Top view of the porosome associated with secretory granules, obtained from the stimulated tissue with $1\mu\text{M}$ carbamylcholine. Here, the porosome has an inner ring (ir) of 60 nm, an outer ring (or) of 176 nm diameter and ten lateral-vertical ridges (rg) who link these two rings.